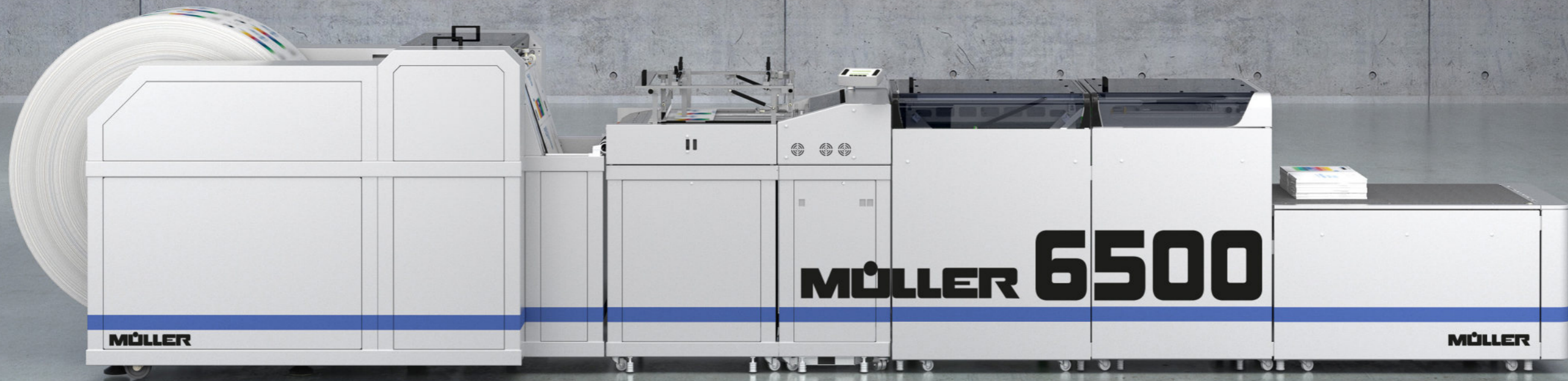


# 6500



DYNAMIC HIGH-PERFORMANCE CUTTING SYSTEM





MÜLLER

MÜLLER 6500

MÜLLER



# MÜLLER 6500

## DYNAMIC HIGH-PERFORMANCE CUTTING SYSTEM

The Müller 6500 processes print applications reliably and productively at speeds of up to 90 m/min. Regardless of whether the documents come from the stack or from the roll – the web cutting system can produce transactional and graphic arts applications in all common formats from 4" to 19.5".

The dynamic high-performance cutting system processes 1-up or 2-up with variable bleed for bleed-off printed products and allows stacking for parallel printing in two stacks (Book of Two) or optionally stacking for slalom printing in one pile (Book of One). With both variants, Offset stacking is possible as standard.

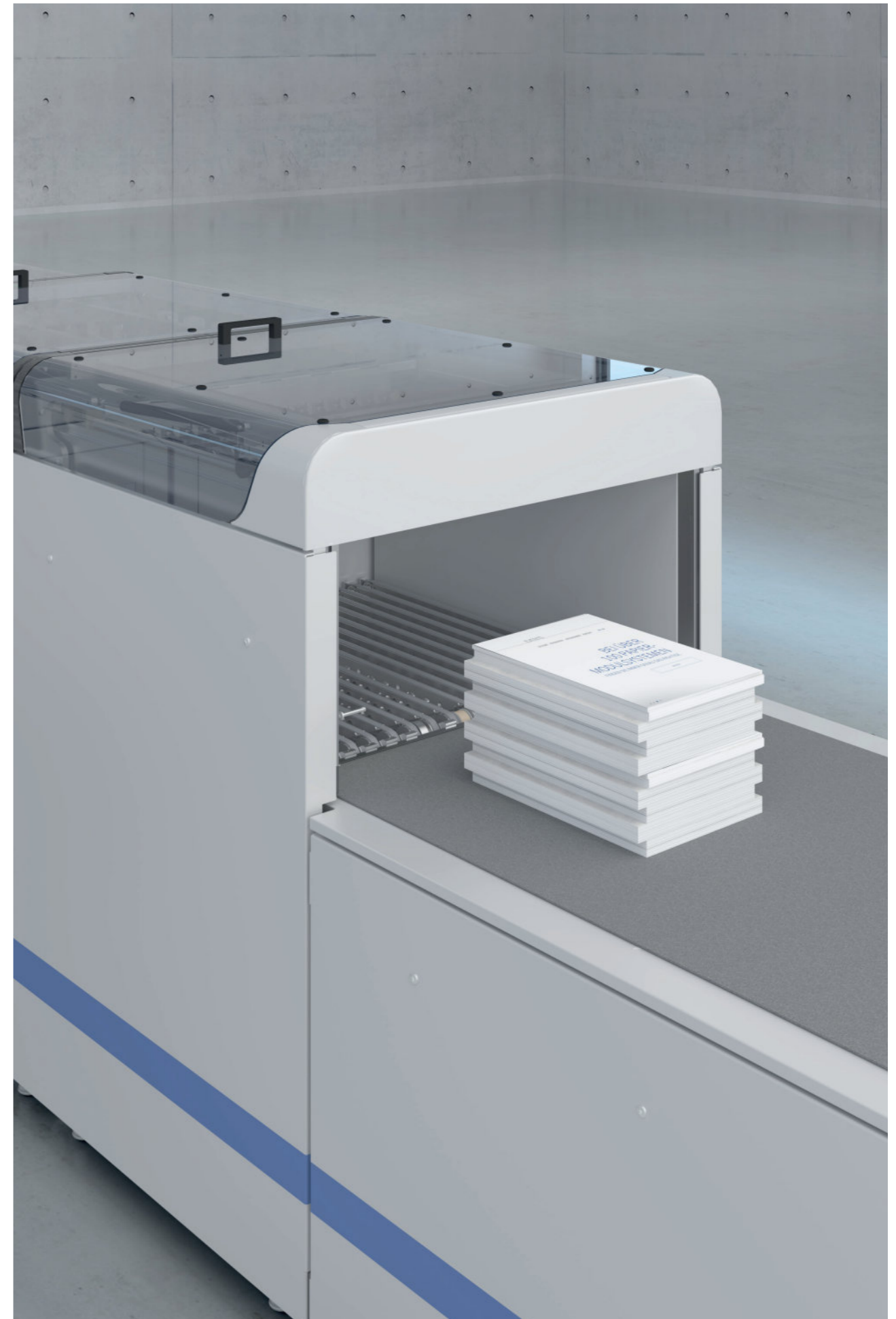
Simple and uncomplicated operation, high running speed and sufficient storage capacity for cutting patterns ensure smooth production. In addition to cutting, the Müller 6500 also enables perforating, punching and merging of groups, as well as the output of individual groups almost in continuous operation.

**Configuration flexibility** • customized system design

**Flexible processing** • 1-up to 2-up

**Ease-of-use** • central display, short makeready times

**Print sequence** • slalom printing or parallel printing



## MÜLLER 6500

With the Müller 6500, printed products – whether from the stack, from the roll or online from the printer – are processed quickly and reliably. Each job can be output separately, staggered individually in the stack, or output when the user-defined stack height is reached. The piles produced are accurately cut, precisely trimmed, evenly spaced and ready for further processing or distribution.

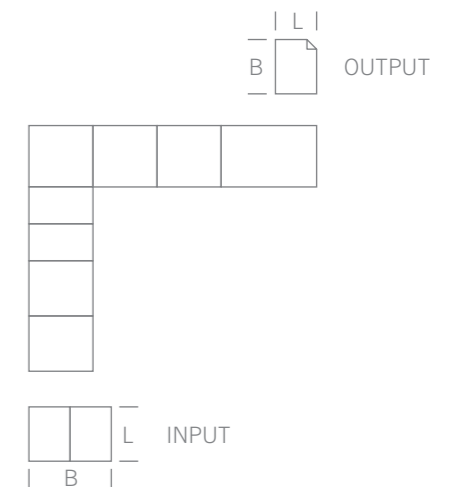
PAPER WEB WIDTH INPUT	PINFEED: 88 – 500 MM (~ 3" - 20") PINLESS: 190 – 500 MM (~ 7" - 20")
DOCUMENT WIDTH OUTPUT	100 – 500 MM (~ 4" - 20")
DOCUMENT LENGTH OUTPUT	110 – 500 MM (~ 4" - 20")
PROCESSING	1-UP / 2-UP PINFEED OR PINLESS
DIMENSIONS (LxWxH IN MM)	4740 x 760 x 1220 MM
STACKING HEIGHT	STACK UP TO 2,000 SHEETS (80 G/M <sup>2</sup> )



## MÜLLER 6500 SQ

With the Müller 6500 SQ high-performance cutting system, documents are processed easily and quickly in slalom printing. The cut documents are then output in a stack (Book of One), depending on the desired requirement. Optionally with web storage, online production takes place almost continuously. This increases the document set considerably.

PAPER WEB WIDTH INPUT	PINFEED: 88 – 500 MM* (~ 3" - 20") PINLESS: 190 – 500 MM* (~ 7" - 20")
DOCUMENT WIDTH OUTPUT	100 – 525 MM** (~ 4" - 21")
DOCUMENT LENGTH OUTPUT	110 – 480 MM** (~ 4" - 19")
PROCESSING	1-UP / 2-UP PINFEED OR PINLESS
DIMENSIONS (LxWxH IN MM)	2860 x 3290 x 1220 MM
STACKING HEIGHT	STACK UP TO 2,000 SHEETS (80 G/M <sup>2</sup> )



\* without edge trim 480 mm  
\*\* depending on configuration

# POSSIBLE APPLICATIONS

The requirements for the Müller 6500 cutting systems can be defined in four steps:

**Step 1:**

**Input – Which paper should be processed?**

The Müller 6500 can process both pinfeed and pinless paper.

**Step 2:**

**Input – How is the paper fed?**

The paper can be fed into the cutter in various ways – from the fanfold stack, from the roll or online from the printer. Depending on the configuration and customer requirements, the appropriate input device can be selected.

**Step 3:**

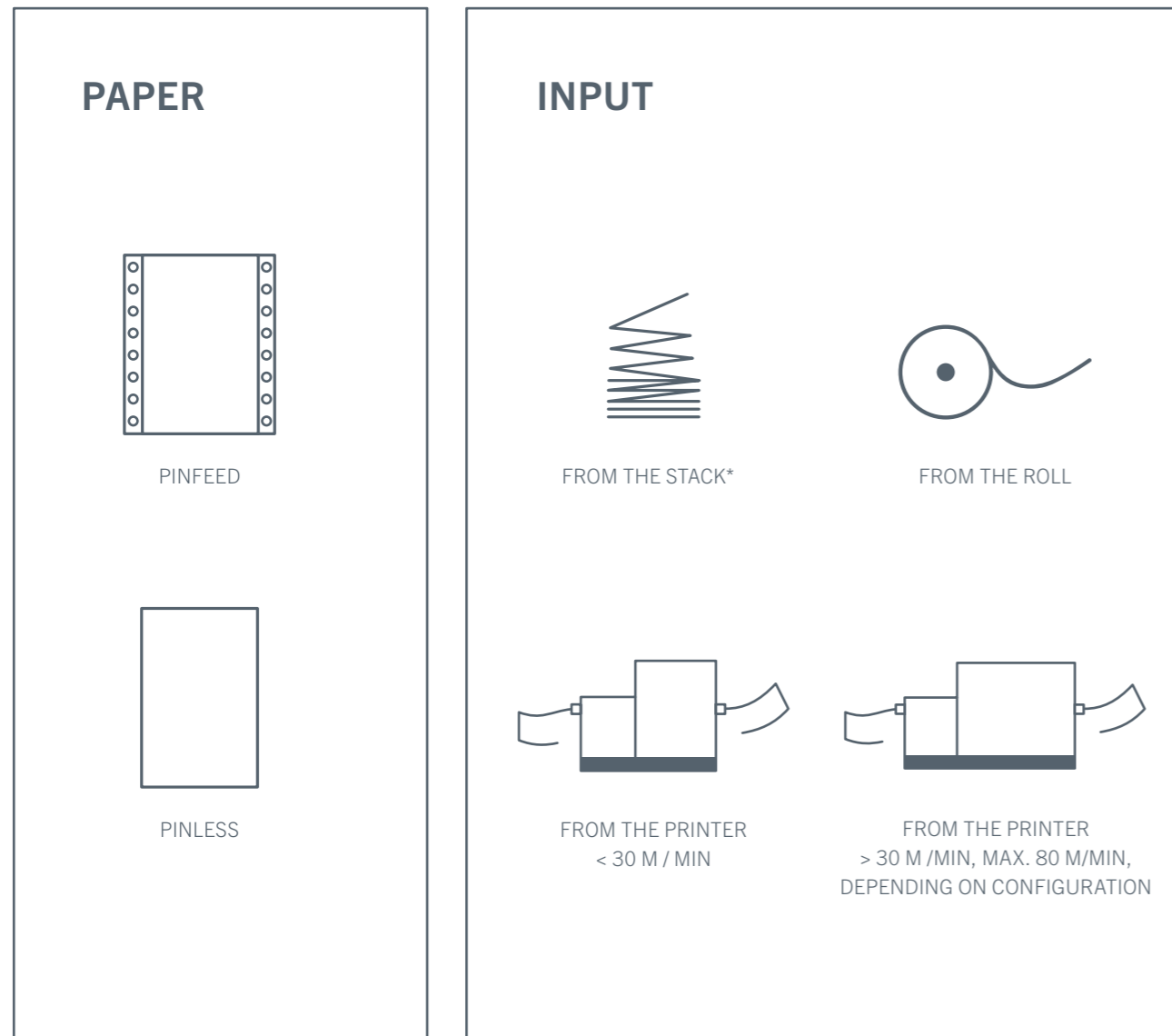
**Function – How should the paper be processed?**

Depending on the customer requirements, the cutting system can be configured individually. The main function of each cutting system is to trim the document to the desired final format. In addition, the system can be equipped with further functions: Perforating, merging documents or offset documents in groups via counter or code control.

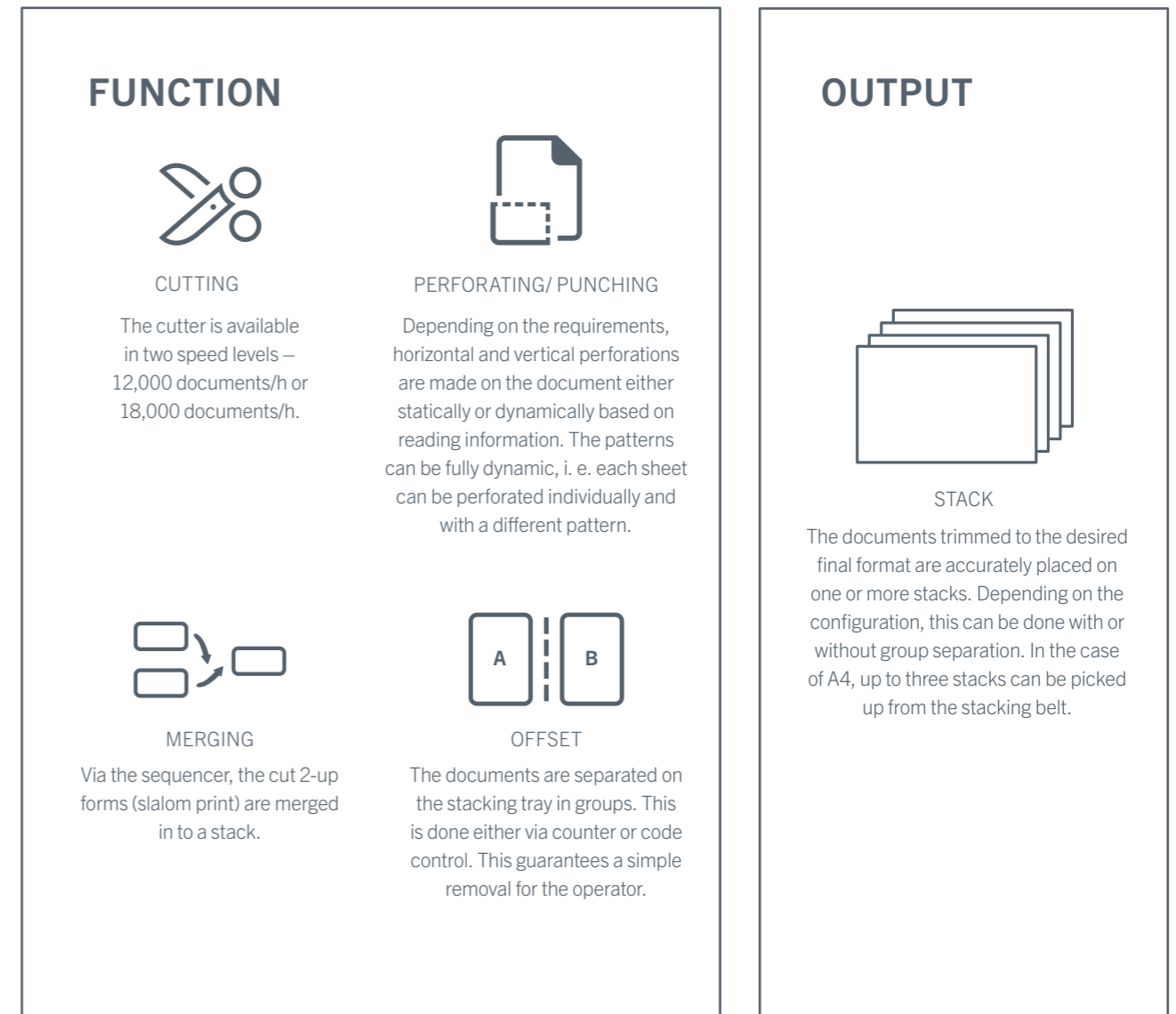
**Step 4:**

**Output – How should the paper output look like?**

After the paper has been processed, it can be laid down as a stack with or without group separation.



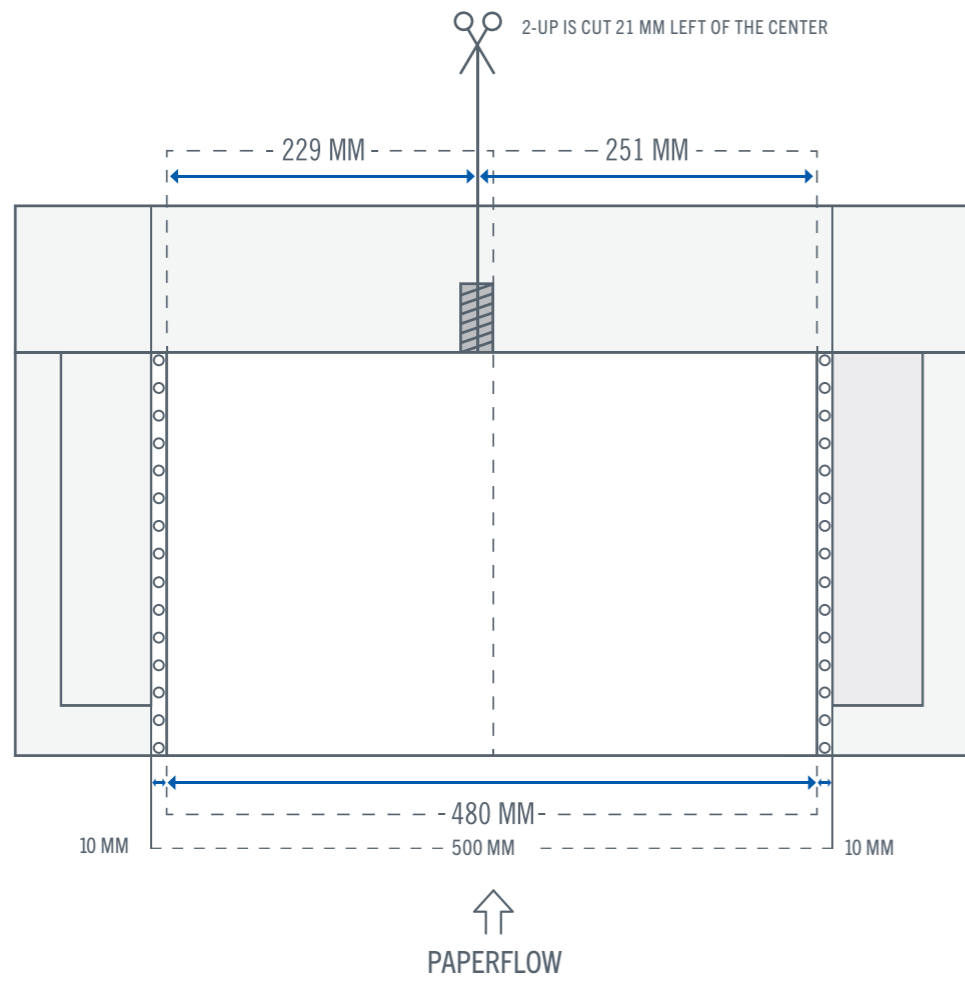
\* not possible, if perforation desired





### CENTER KNIFE

The schematic diagram shows the position of the center knife in the cutter. The center knife is offset slightly (21 mm) to the left. Accordingly, the maximum dimensions for the cut in the 2-up are 229 mm and 251 mm.



**OPTION  
WEB BUFFER**

With a direct connection to a printer, the web buffer stores 20 meters of the paper web. The buffer is available with or without paper web tension.



**OPTION  
WASTE EXTRACTION**

The mobile waste extraction with large container takes up the edge strips and gutter-cuts. When the waste container is full, the Müller 6500 stops automatically.



TECHNICAL DATA\*

PERFORMANCE	12,000 – 18,000 DOCUMENTS /H IN 12" SINGLE CUT (1-UP)  PINLESS OR PINFEED
PAPER	(40) 60 – 200 (250) G/M <sup>2</sup>
PROCESSING	1-UP UP TO 2-UP
CUTTER	HORIZONTAL SLIT- AND GUTTER-CUT <hr/> VERTICAL SLIT- AND GUTTER-CUT (LEFT, RIGHT, WITHIN THE DOCUMENT) <hr/> EDGE TRIM 28 MM (OPTION UP TO 60 MM) <hr/> RECOMMENDATION: WASTE EXTRACTION WITH SHREDDER FOR PINLESS-CUTTER DUE TO ENDLESS EDGE STRIPS <hr/> FEED RATE 1/6", 1/8" OR 1/24"; SPECIAL FEED RATE FOR PINFEED
STACKER	STACKS UP TO APPROX. 2,000 SHEETS (80 G/M2) <hr/> GROUP SEPARATION (OFFEST) VIA READING OR PRESET COUNTER
INTERFACE	VIA MÜLLER-PRINTER-INTERFACE

\* Special dimensions are optionally available on request.

# MÜLLER

## FLEXIBLE PAPER MANAGEMENT SOLUTIONS

Müller stands for extremely flexible paper management solutions for the automated processing of digital print products. From cutting, folding and inserting through to the verification of documents and the affixing of plastic cards: Systems from Müller feature the latest technology and a high level of reliability for a wide range of different requirements from transaction printing through to graphic arts applications.

Müller works according to a unique principle: paper management systems are configured from more than 100 combinable modules to meet individual customer requirements. The modules cannot only be combined with one another but can also be integrated into existing systems. Whenever there is a new customer application to be realised, the modules can be quickly and easily combined to form a new configuration. The Müller module concept also automates applications that could previously only be processed manually.

From the mechanics and electronics through to the software, Müller produces almost every component itself to the highest German quality standard. This not only speeds up the development of the systems while guaranteeing the long-term availability of spare parts but also allows customer-specific adaptations to be carried out at any time.

**Müller.**  
**Flexible. Intelligent. Efficient.**





Müller Apparatebau GmbH  
Gewerbepark 19  
85402 Kranzberg  
Germany

+49 8166 670 -0  
[info@mueller-phs.com](mailto:info@mueller-phs.com)  
[www.mueller-phs.com](http://www.mueller-phs.com)